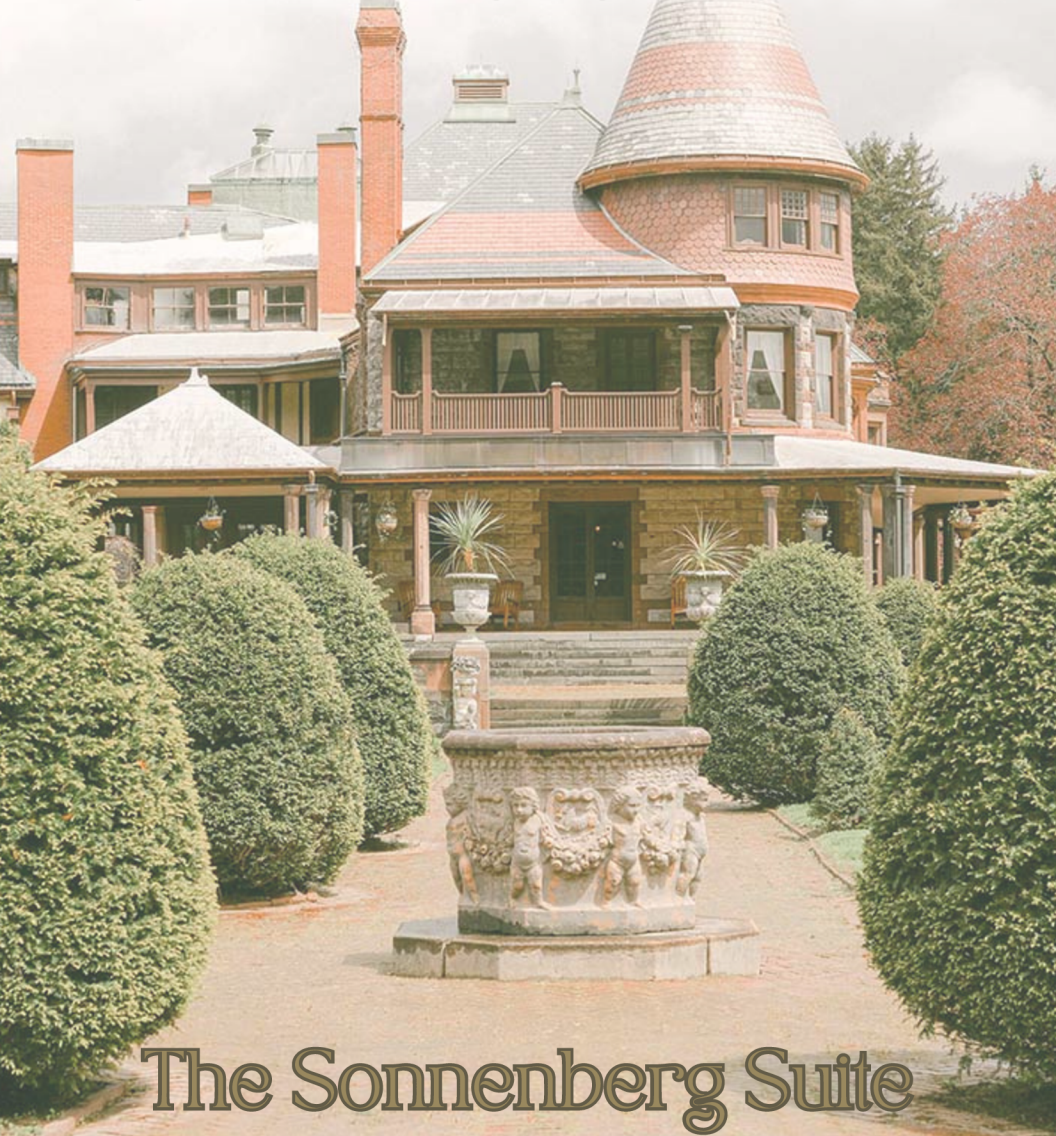


ARTEMIS

CHAMBER ORCHESTRA



The Sonnenberg Suite

Sunday, November 17th | 3:00pm
Nichols Hall, Music Institute of Chicago
Evanston, IL

WELCOME

Dear Friends,

Artemis Chamber Orchestra's fourth season has arrived! I am so pleased to be your host once again and that you are here to celebrate beautiful music with us.

I am delighted to announce an addition to the Artemis team, a cellist who has performed with us before and is stepping in as Outreach Coordinator, Herine Coetzee Koschak. Herine has worked in as a chamber musician in the Chicago music scene for over fifteen years, bringing much needed experience and wisdom to our organization. I look forward to seeing how she helps us grow!

Today, we welcome special guest artists ATLYS Quartet to the stage, who join us as soloists and principals in Ari Fisher's *The Sonnenberg Suite*. Thomas Mees commissioned Ari to write this string quartet for ATLYS and the New York Sonnenberg Gardens in 2021. His arrangement for our string orchestra brings added lines and a fullness of timber without losing its nuance and grace. In his typical Neo-Romantic style, Ari evokes many heartfelt emotions through digestible yet innovative harmonies and a lot of juicy suspensions.

ATLYS released their exquisite recording of the quartet two days ago, find it on all streaming platforms or buy physical copies on their website.

Sit back and enjoy this outstanding piece!

Yours,
Diana Economou
Music Director





The Sonnenberg Suite

Sunday, November 17, 2024

3:00pm

Nichols Hall

Music Institute of Chicago

Evanston, IL

Diana Economou, Conductor

Ari Fisher (1991)

The Sonnenberg Suite

I. Sonnenberg Gardens

II. Japanese Garden

III. Sub-Rosa Garden

IV. Rose Garden

V. Old-Fashioned Garden

VI. Blue and White Garden

VII. Pansy Garden

VIII. Rock Garden

IX. Moonlight Garden

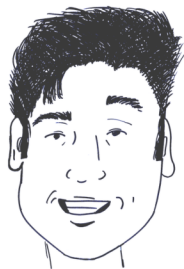
X. Italian Garden

PROGRAM NOTES

The Sonnenberg Suite

I. Sonnenberg Gardens

This grand overture begins with Sonnenberg Estate owner Mary Clark Thompson's theme. This theme can be heard throughout the suite, depicting Thompson as she walks through each of her gardens. The movement is flavored with flowing melodies reminiscent of Borodin, Tchaikovsky, and Dvořák. The movement builds to a raucous climax before a stunning cello solo slows the piece back down. Near the end, a particularly delicate solo violin accompanied by gentle pizzicato. Perhaps this is Mary thinking of her late husband and the tender moments they shared before being whisked off to celebrate the opening of the gardens, built in his memory.



II. Japanese Garden

Thompson's peaceful Japanese Garden contains tiny stepping stones, a teahouse, and a slow flowing river. The themes are inspired by the texture of nature, rustling leaves, occasional breezes, and the famous Sakura folk melody about cherry blossoms. In homage to the *kobu*, the only traditional Japanese string instrument played with a bow, the melody is played high up on the cello. The orchestra achieves a truly quiet sound and unique color utilizing metal practice mutes.

III. Sub-Rosa Garden

We duck into the beautiful lush greens of Thompson's private hideaway with playful pizzicatos then warm chords that reach a breathtaking climax as the marble fountain flows. Slow tender music follows, reflecting the serene calm felt after being alone in the "secret garden".

IV. Rose Garden

Coming from the quiet resolve of the Sub-Rosa Garden, the Rose Garden blooms dramatically into a melancholy cello solo accompanied by fluttering strings that color the mind's eye with French Impressionism. Just as every rose has its thorn, the Rose Garden explores the sometimes bittersweet tenderness of love and heartbreak. This movement is extra special to Ari and ATLYS because he arranged for the quartet to perform it in the gardens as he proposed to his darling wife, Jamie.

V. Old-Fashioned Garden

The main melody of the movement is a neoclassic minuet inspired by Haydn and early Beethoven. We dance through pathways of a formal English country garden with a splendid pergola.

VI. Blue and White Garden

We hear Thompson's theme as we enter her favorite garden featuring only blossoms of, you guessed it, blue and white. This limitation brings together flowers perhaps not typically seen together: blue ageratum, blue delphinium, blue salvia, sweet alyssum, campanula, phlox, hyacinth, and agapanthus.

VII. Pansy Garden

A short movement shines a spotlight on the gorgeous, warm, and chocolatey sound of the viola, supported by colorful harmonies of the other strings. The botanical latin name of the pansy, after all, is "viola".

VIII. Rock Garden

With its statue of Pan, earthy stone walkways, and shaded tunnels, this garden has darkly dissonant sounds until the rising entangled scales illustrate the thick climbing hydrangea that follows up a hundred year old staircase to the roof of an open stone summer house.

IX. Moonlight Garden

This garden, best viewed at night with its white flowers and silver foliage, begins rhapsodically, almost improvised. As the introduction comes to a close, the solo viola plays a lullaby while the rest of the ensemble joins in counterpoint, filling in intense harmonies. The movement ends with a restatement of the theme played using harmonics, eerie whistling tones, painting the image of the garden mysteriously glistening in the moonlight.

X. Italian Garden

The suite concludes with a rip-roaring Rondo Tarantella, a rapid whirling dance originally from southern Italy. The piece comes to a brilliant end, accelerating until it seems to collapse with exhaustion and bravura!

Program note by Ari Fisher

ARI BARACK FISHER



Ari Fisher is an award-winning composer whose diverse body of work spans film scoring, video games, and classical music. A recipient of the Jon Vickers Film Scoring Award in 2015 for his score to the 1916 silent film *The Return of "Draw" Egan*, Fisher's reworked score premiered in Europe at the 2019 Pordenone Silent Film Festival. His 2021 collaboration with the cross-over string quartet ATLYS and EDM artist Jeff Montalvo (Seven Lions) resulted in a critically acclaimed album, *OPUS*, featuring string quartet arrangements of Seven Lions' hits, performed at Red Rocks Amphitheater and The Gorge Amphitheater.

Fisher earned his Master's degree from the Jacobs School of Music, studying with Sven-David Sandström, Claude Baker, Don Freund, and Aaron Travers. He furthered his education with a Certificate Program at the Nadia Boulanger Institute in Paris, mentored by Narcis Bonet, Philip Lasser, and Michel Merlet. Co-founder and music director of ZREO Studios, Fisher is currently Composer-in-Residence for the Artemis Chamber Orchestra. His works have been performed internationally, including in Austria, Belgium, France, Germany, Italy, South Korea, Taiwan, and throughout the United States.

ATLYS



ATLYS is a mold-breaking and genre-defying string quartet lauded for their passionate and dynamic performances and signature sound. Equipped with the power of stringed instruments, ATLYS is both an ambassador for Shar Music and Swiss audio tech company Schertler, whose microphones allow ATLYS to harness the dynamism of the 21st century.

Curating programs that are both diverse and intriguing, ATLYS has graced stages such as Red Rocks and the Gorge with over 1000 performances under their belt. And with over 13 million streams on Spotify, they have inspired listeners across the globe. ATLYS has revolutionized their paradigm, perfecting the art of remote recording, launching a YouTube channel, and publishing their unique arrangements. Crossing borders with incessant passion, ATLYS is always searching for new spaces, and distinctive methods to captivate and inspire an ever-growing audience, live and virtual.

—  —

Z E I F E R T

— E Y E C A R E —

1849 Green Bay Rd Ste 165
Highland Park, IL 60035

(847) 780-3806
zeiferteyecare.com





ABOUT ACO

Music is capable of affecting its listeners in profound ways. Perhaps more than any other art, music is able to enter our souls directly and alter us for the better. Live music brings people together to share in a momentary but beautiful and unique communal experience, something sorely needed these days.

Artemis Chamber Orchestra was formed to provide this experience to the people of the North Shore. We seek to perform masterworks of the orchestral chamber music repertoire at the highest level to provide our audience with the experience of beautiful music, something which not only engages and inspires us, but transforms lives.

There is a surprising absence of chamber music in our community. By staying local and accessible to our audience, hiring from the abundance of highly qualified local musicians, and commissioning local composers, we are actively working to grow the classical music scene in the North Shore.

Additionally, ACO holds Partner Concerts with Title 1 schools to provide outstanding musical experiences to students who otherwise would not have the opportunity to play with and hear professional orchestras.

MUSICIANS

ADVISORY
COMMITTEE

ATLYS, soloists

Sabrina Tabby, violin
Jinty McTavish, violin
Kayla Cabrera, viola
Genevieve Tabby, cello

Violin

Queenie Edwards, *Assistant
Concertmaster*
Gereltuya Tumor
Sam Battista
Jason Hurlbut
Stella Mkrtychyan
Katie Klocke

Viola

Robert Switala
Bonnie Yeager

Cello

Timothy Archbold

Bass

Michael Martin

Markand Thakar; *Music Director, BCO*
Elaine Jaharis
Vangelis Economou; *Economou IP
Law*
Mark B. Burka; *CFA*
Arnim Whisler III; *Private Equity*
Endy Zemenides; *HALC Executive
Director*
Christina Weisbard
Donald Schleicher; *Northwestern
University*

BOARD

Diana Economou, *President*
Cailin Whisler, *Vice President*
Christos Economou, *Secretary*
Vaso Ventresca, *Director*
Bill McGrath, *Director*

MUSIC DIRECTOR, FOUNDER



Diana Economou is a conductor from Chicago's north suburbs whose passion and talent for music has led her to perform around the world including in the Chicago Symphony Center, the Sydney Opera House, and in Sofia, Bulgaria. She's trained with leading conductors such as Markand Thakar, Larry Rachleff, Gary Lewis, and Donald Schleicher and has conducted professional orchestras such as the Baltimore Chamber Orchestra and the Bulgarian New Symphony Orchestra. In 2019 Diana founded Artemis Chamber Orchestra and proudly serves

as music director. After obtaining two music education degrees from the University of Illinois Urbana Champaign, she now works as a passionate and beloved orchestra teacher in Mount Prospect, Illinois.



MENDEL MONEY
MANAGEMENT

Mendel Money Management has provided transparent, fee-only wealth management and financial planning services for over 30 years. Our firm was founded on two guiding principles: to act with integrity and to always act in our client's best interests. We offer a personalized planning experience based on your unique circumstances and goals.

Our guidance occurs at the intersection of your money and your life - where you need it the most. We invite you to discover how we can help you reach your goals.

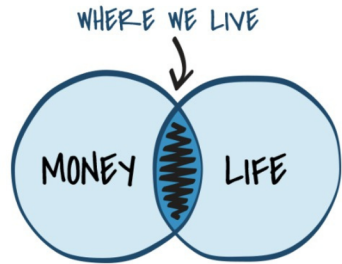


Image inspired by the work of Carl Richards

Client Experience

Many financial firms claim they can help, often before you've even met. We focus on getting to know you first.

That's what makes our client experience and **PersonalPath Planning Process** different. We focus on building a foundation of mutual respect and trust with you. We take our time to understand your unique planning needs and goals, as well as address questions and concerns. This process allows us to customize the open lines of communication, establish clear expectations, and craft the optimal plan for you.



Interested in discussing how we can work together?
We'd love to hear from you.

1200 Shermer Rd. Suite 312
Northbrook, IL 60062
www.mendelmoney.com
847-564-0970
info@mendelmoney.com

SUPPORTERS

Artemis Chamber Orchestra gratefully acknowledges our donors:

Bessie Alexopoulos	Kate and Daniel Lin
Fern Anderson	Mike Liu
Tom Arnold	Georgia and George Londos
Diane and Greg Beckway	Kristi Lindahl
Beverly Beinlich	Peter and Evelyn Maratos
Ann Stuart Bell	Neil and Lisa McTavish
Wayne Benjamin	David and Maureen Melnick
Lorin and Iuliana Blumenfeld	Joel and Michele Melnick
John Bicknell	Sam and Ali Melnick
Suzu and John Born	Sophie Melnick
Karen Britten	Georgia Mitchell
Barbara Bruno	Ellen Montgomery
Madeline Stewart Aybar	Masumi Nehru
Mark and Margaret Burka	Paul Nelis
Elizabeth and Kenneth Cohen	Heidi Olsen
Claudia Covaviu and Mihai Lehene	The Kerpel Family
Donna Curry	Sharona Palmer
Alexandros and Anna Daskalakis	Souli and Myrta Papaioannou
Carol Daum	Michael and Felicia Perlman
Wendy Davis	John Poust
Dan Delaney	Laura and Rick Prohov
Aristotle Economou and Anaid De La Fuente Martinez	Vicki Christos Rigas
Christos Economou	Janet Ritter
Dina Economou	Andrew Rus
Louisa Economou and Scott Osterhaus	Beth Sanchez
Thanasis Economou	Susan Schendel
Vangelis and Andriana Economou	Bill and Anna Schreck
Lou Ann Erikson	Michael Seng
Charles Fox	Beth Shadur
Elizabeth Garey	Lawrence Smith
Gary Geiger and Mie Tamura	Michael and Angela Sopko
Richard Beth Gerber	Anna and Bill Stotis
Despina Gogos	Michael and Alice Strening
James Grosh and Julia Marran	Eileen Sutter
Maria and George Printzis	Steve Tattleman
Cynthia Hines and Victor Przysieszny	Mary Thompson
Kathryn Hofschield	Annie Trincot
Anne Horn	Niki Tsakalis
Elaine and Steve Jaharis	Julie Victor
Annette Johnston	Christina and Sam Weisbard
Elena Kamel	Edwin Westbrook
Yvonne Kant	Donna Wittiert
Francesca Kelly	Arnim and Jeanne Whisler
Mary Kelton Seyfarth	Charles Wood
Mark Kluge	Vaso Ventresca
Eriko Kojima	Joanne Volakakis
Eleni Konstantinou	Cailin Whisler and Michael Brady
Mizra Leona and Ann Lousin	Spyros Xenos and Jinie Papaioannou
Douglas and Pauline Limberg	Monica Zaha and Claude Radu

Donor support is integral in allowing us to pursue our mission of performing the classical chamber repertoire at the highest level. We could not put on our concerts without generous donations; any sized gift will help ACO thrive for many seasons to come – please donate what you can!

The Artemis Chamber Orchestra is a federally registered 501(c)(3) non-profit organization and donations are 100% tax deductible.



Scan this QR code to visit our website and donate!

NORTH SHORE COMMUNITY BANK

& T R U S T C O M P A N Y[®]

A WINTRUST COMMUNITY BANK

Being the North Shore's community bank means doing our part to give back to the local charities and social organizations that unite and strengthen our communities.

We are particularly proud to support the Artemis Chamber Orchestra and its mission of providing professional musical experiences to students.



"Playing next to a professional made me realize what I could be one day if I stuck with my instrument, and that gave me hope that I would get better and continue to develop my talents."